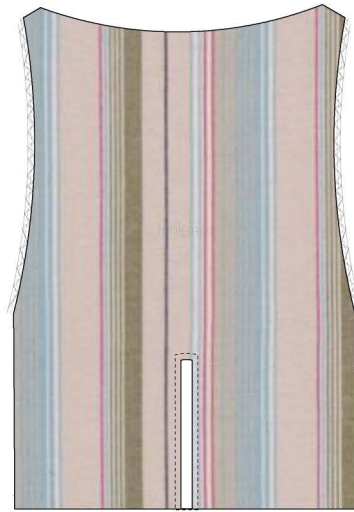
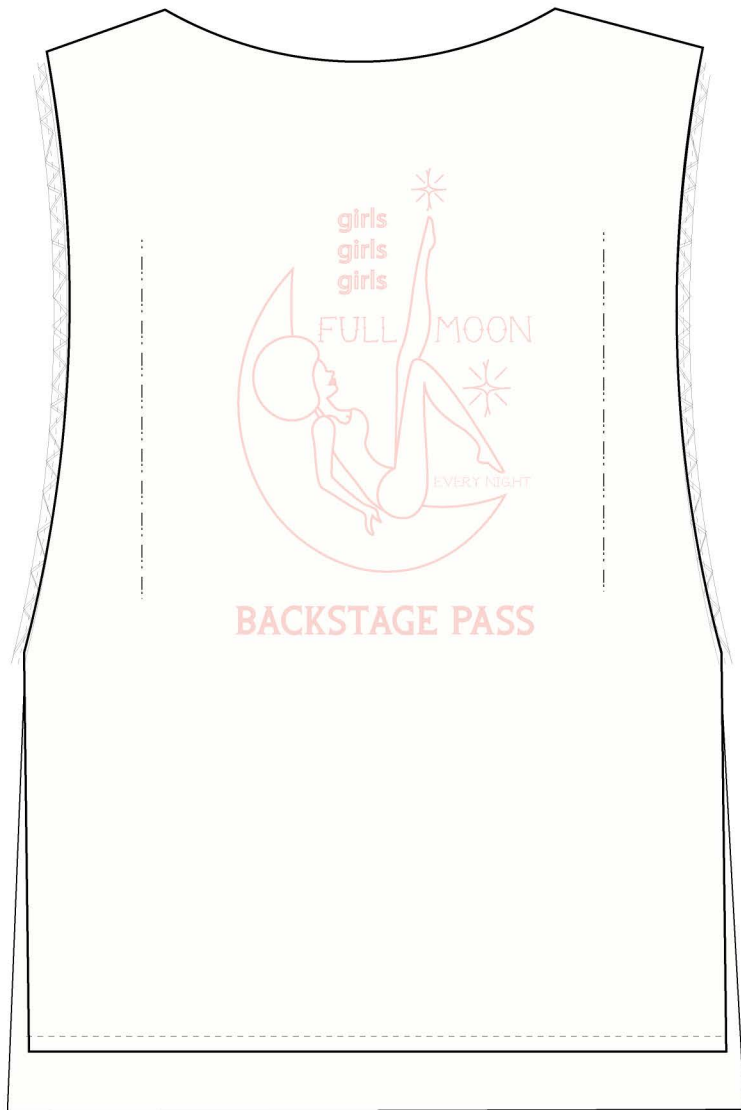


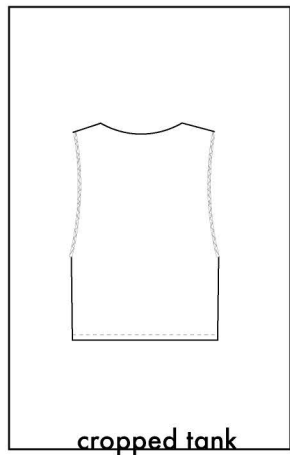
original



women's







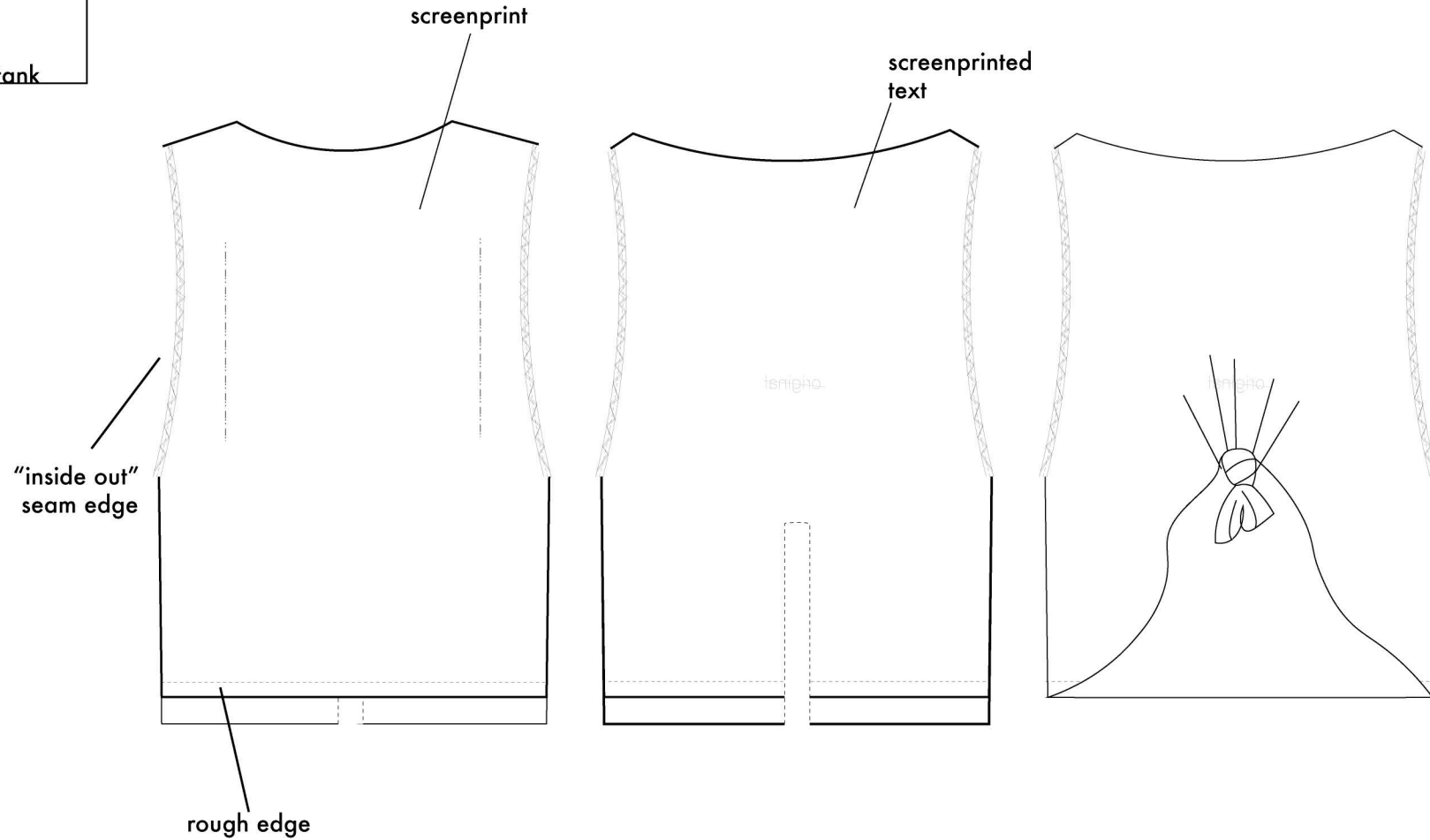
notes

self: Cotton/micromodel blend, suuuperer sheer

notable details: reversible, but main side to have "inside out" look. all seams showing, rough edges on arm holes, neck and hem

logo: slit in back to tie up

logo: logo printed on inside so is faintly seen through back and is backwards.



original
collection one **graphic tease**

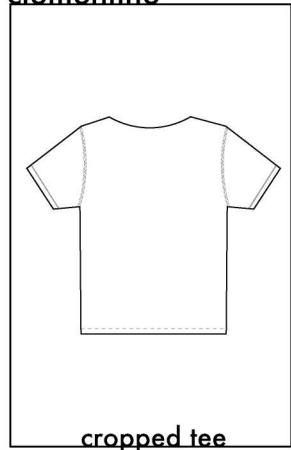
back



front

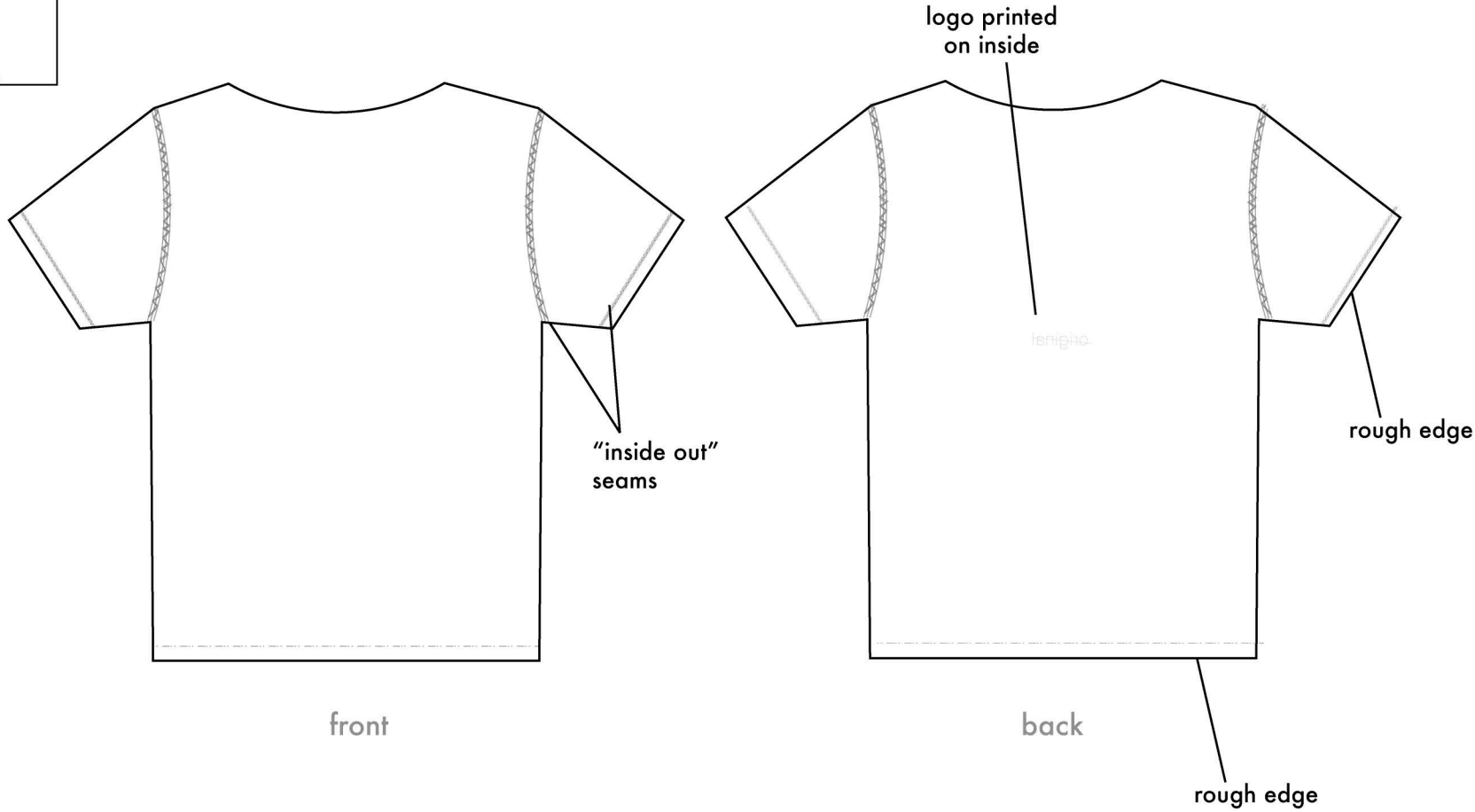
hooch crop

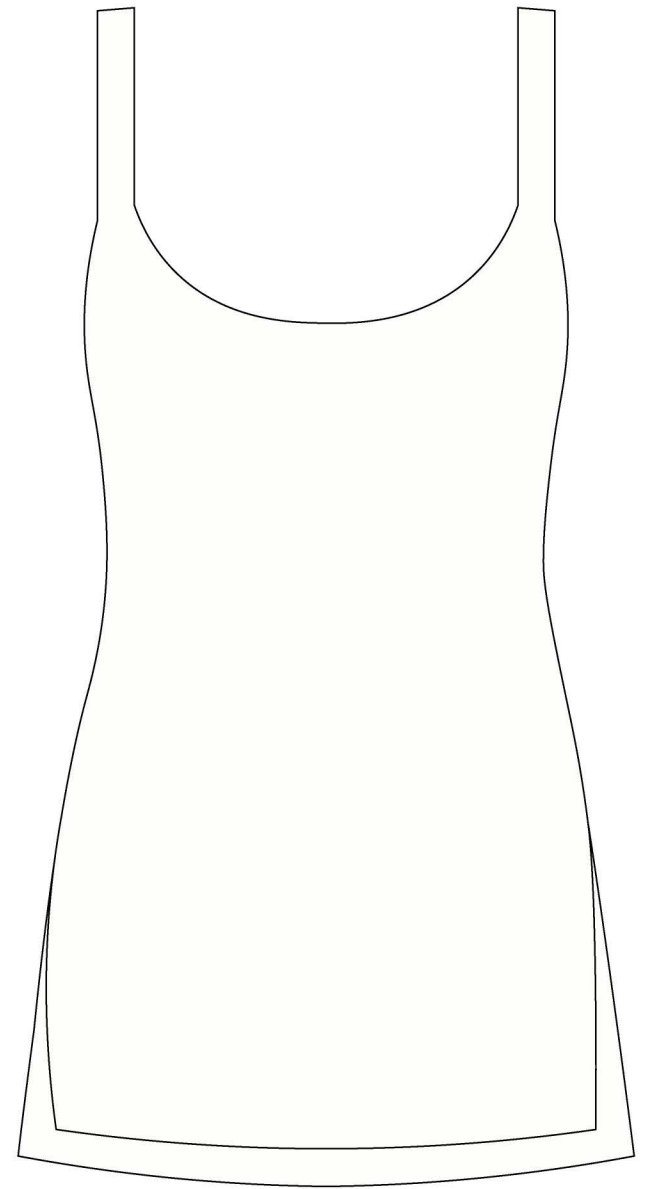
clementine



notes

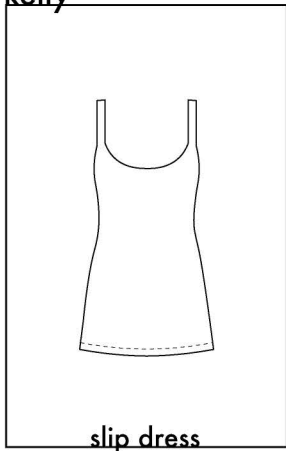
self: Cotton/micromodel blend, supppper sheer
notable details: reversible, but main side to have "inside out" look. all seams showing, holes that form shape of small rectable as if a tag were once there, rough edges on neck and hem
logo: logo printed on inside so is faintly seen through back and is backwards.





motel slip

kelly

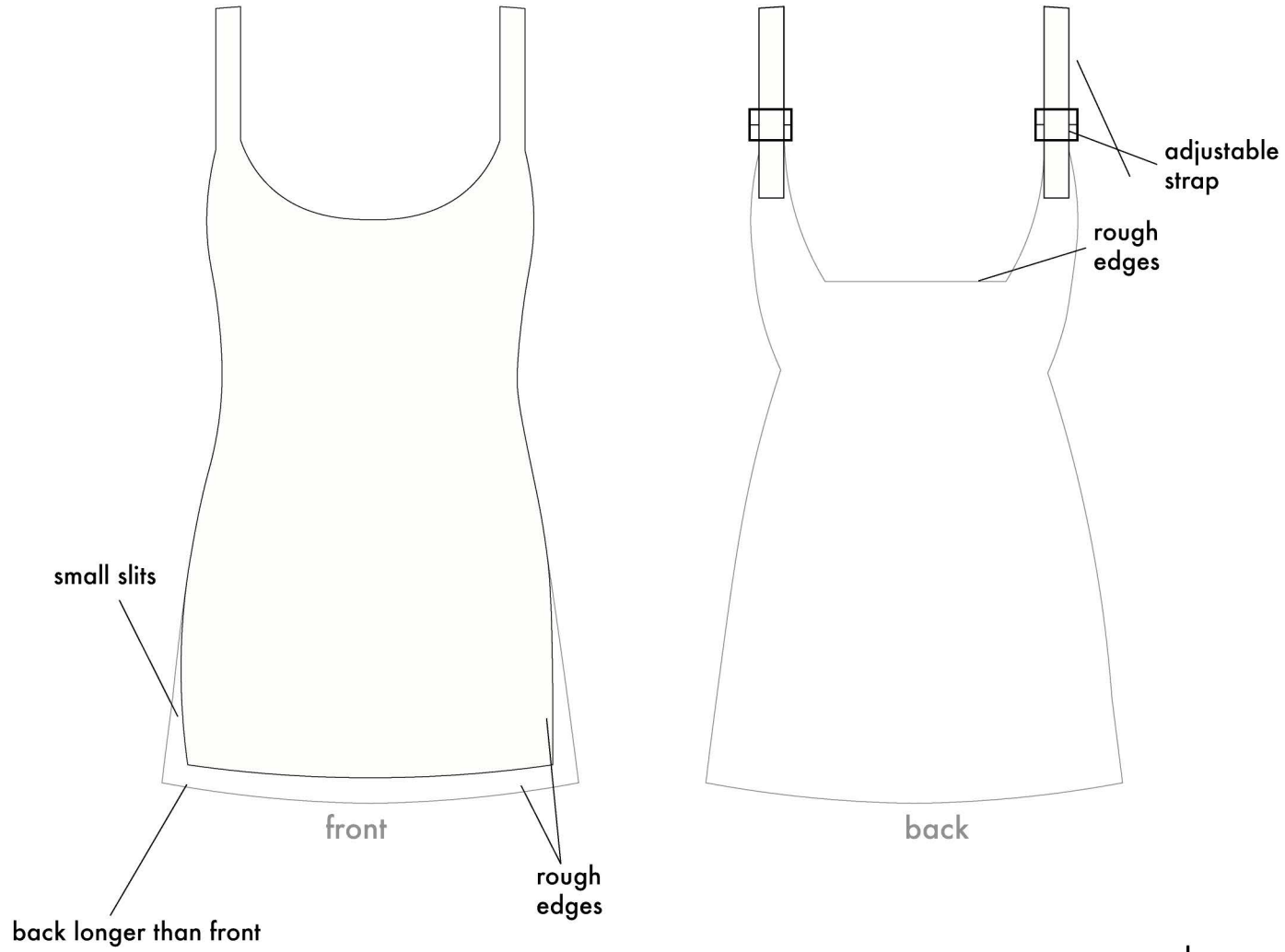


notes

self: pearly shiny poly

straps: pearly white poly

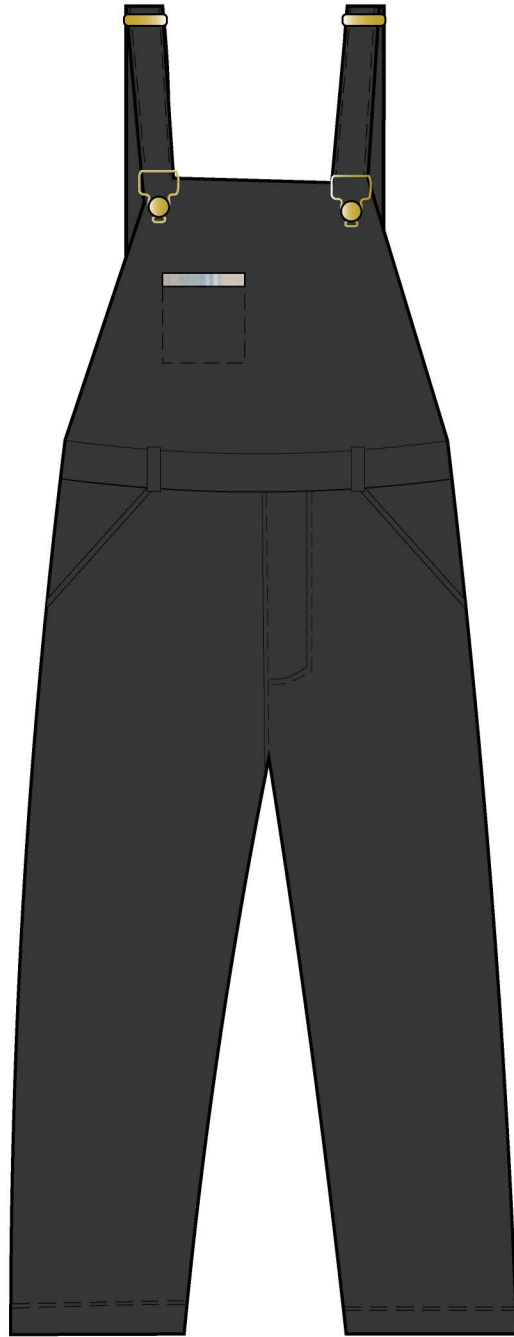
notable details: buckles on straps pearly plastic

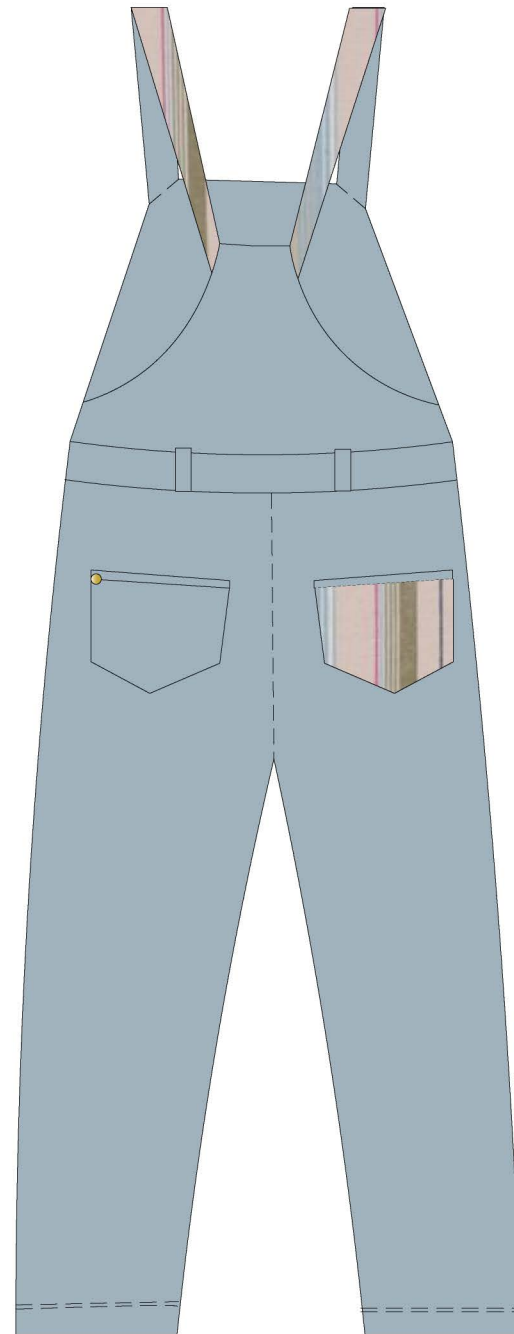


original

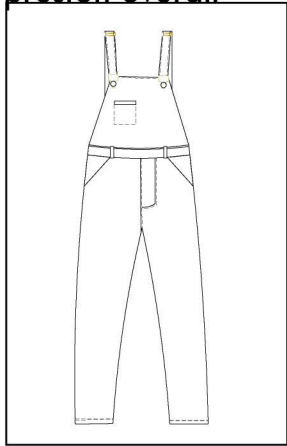
collection one **best dressed**

~~women's~~
men's



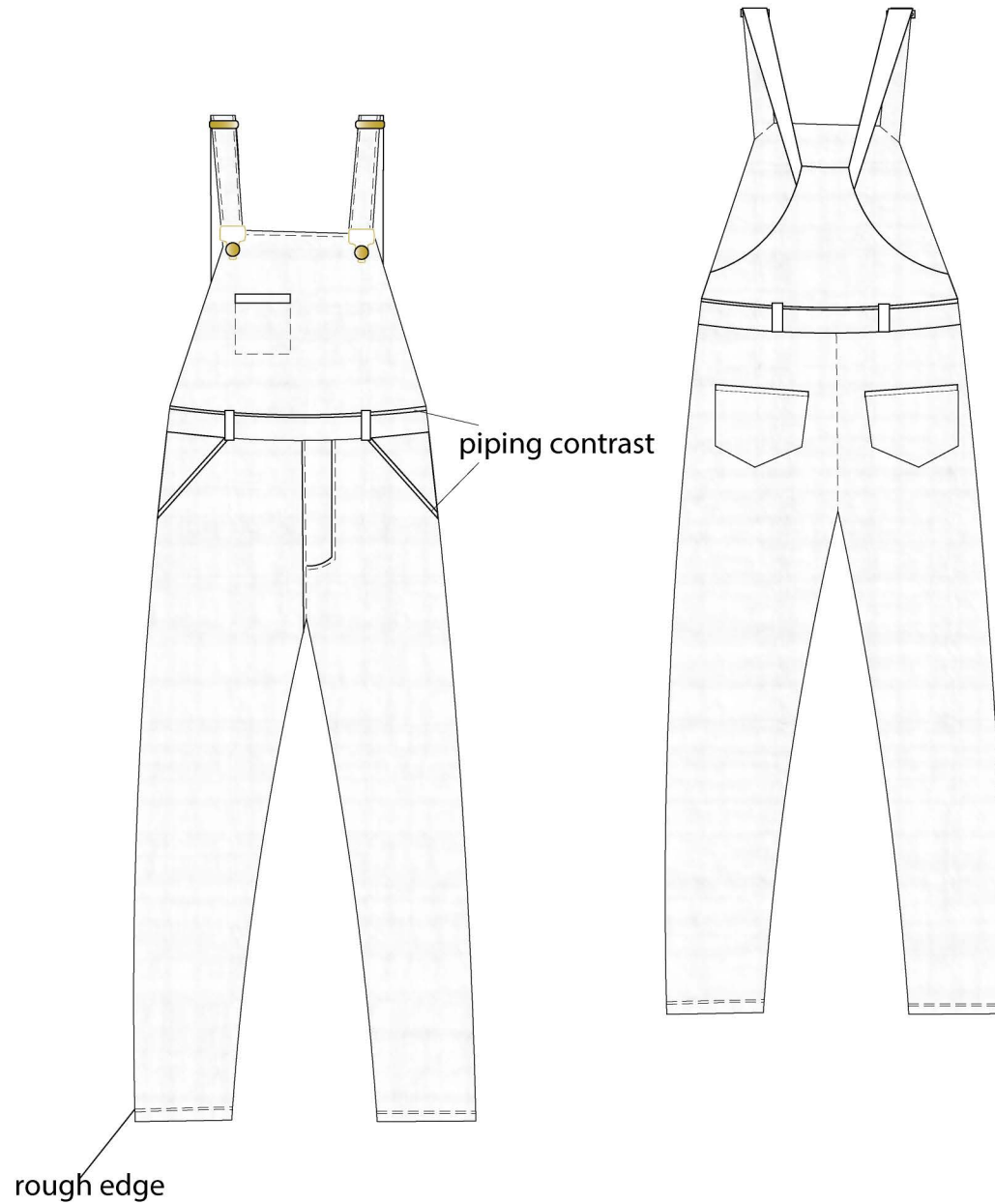


preston overall

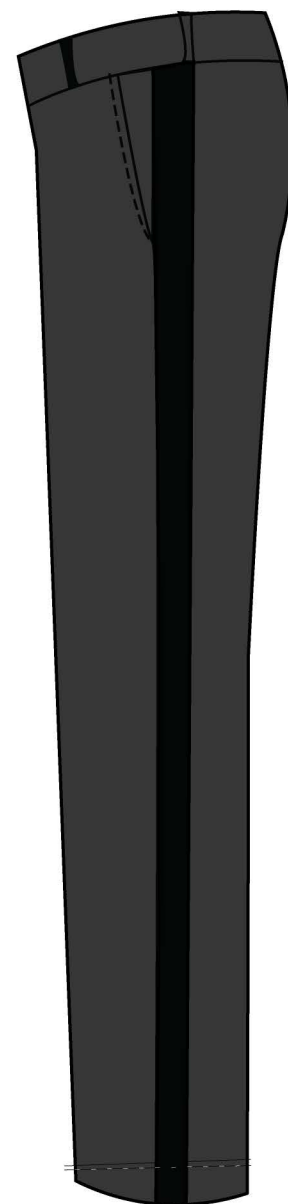
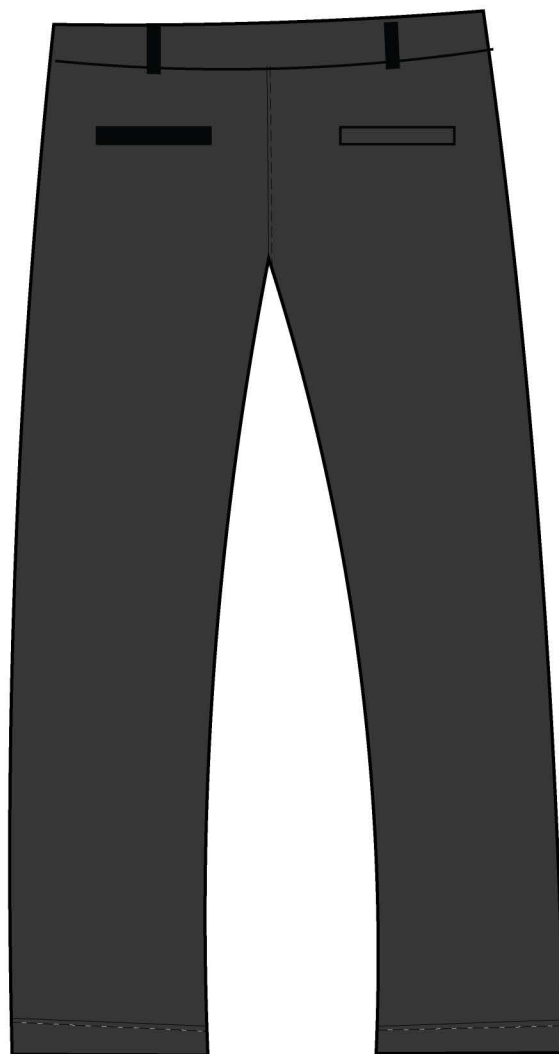
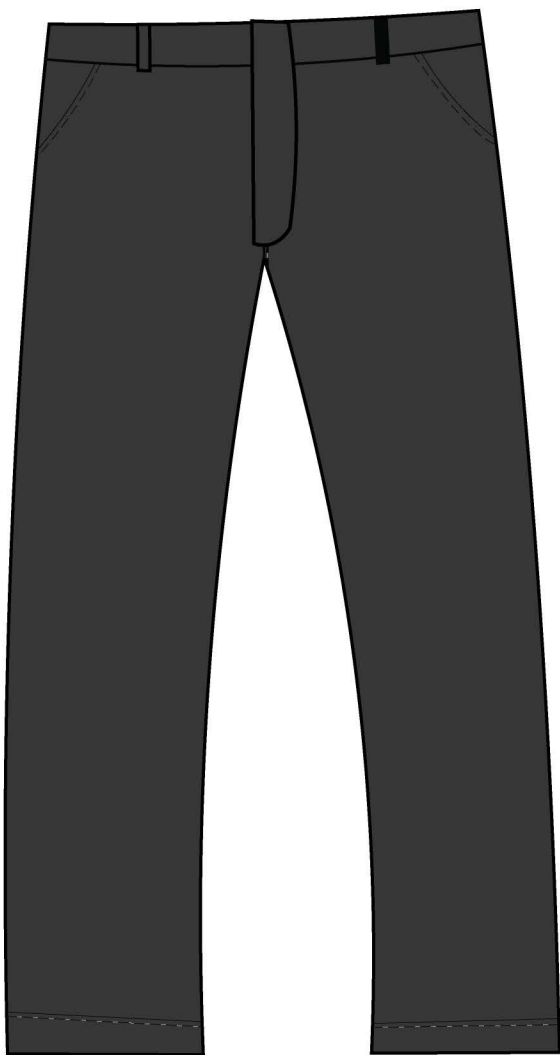


fabrication / notes

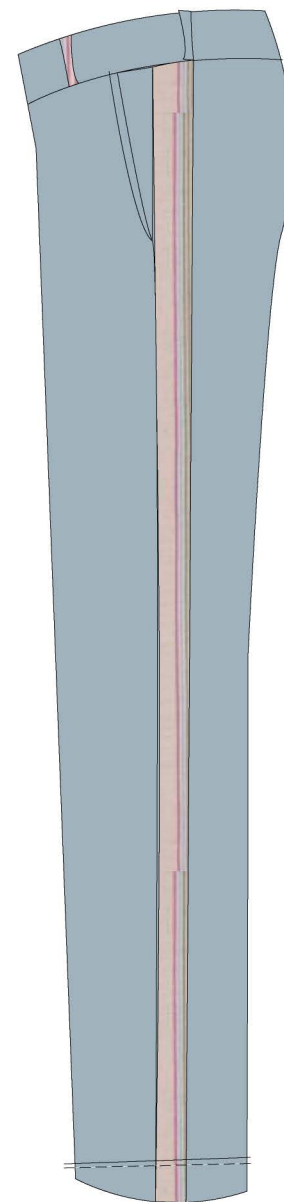
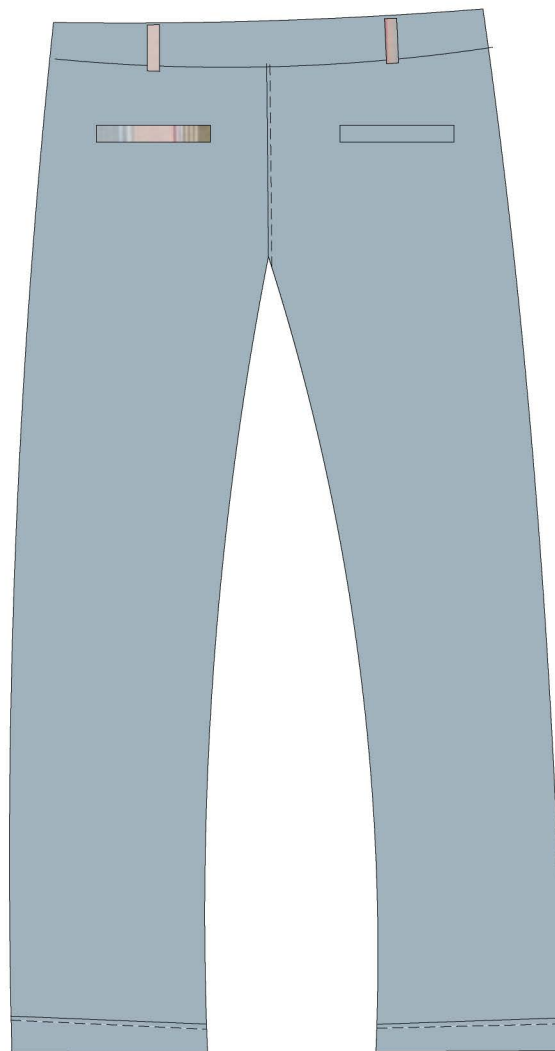
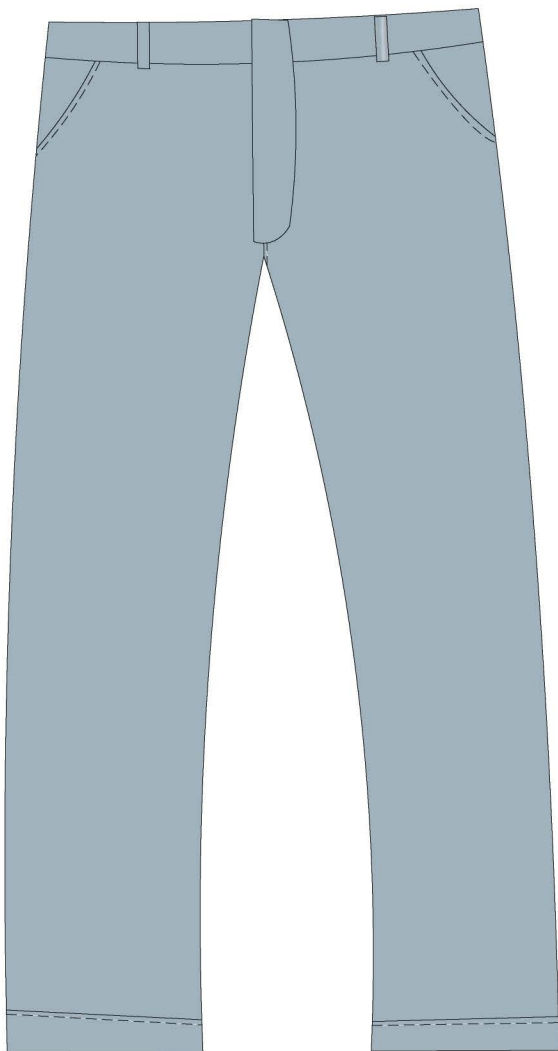
self: denim
contrast piping: cotton fabric



~~original~~
collection one **best dressed**



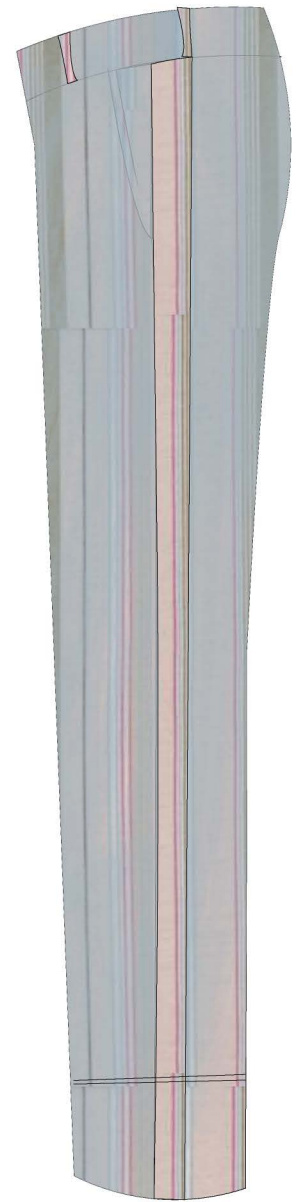
forty pant



forty pant

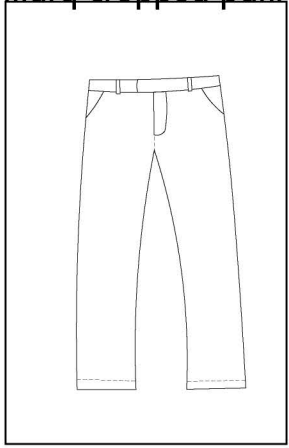


*cotton pant
with spray paint



painters pant

marq cropped pant



fabrication / notes

self: denim

contrast piping: cotton fabric



rough edge

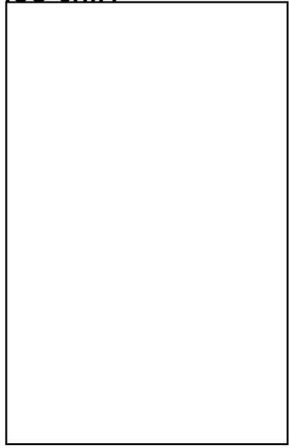
contrast fabric
stripe

sewn down until this line
then let free to move

~~original~~
collection one **best dressed**



leo shirt

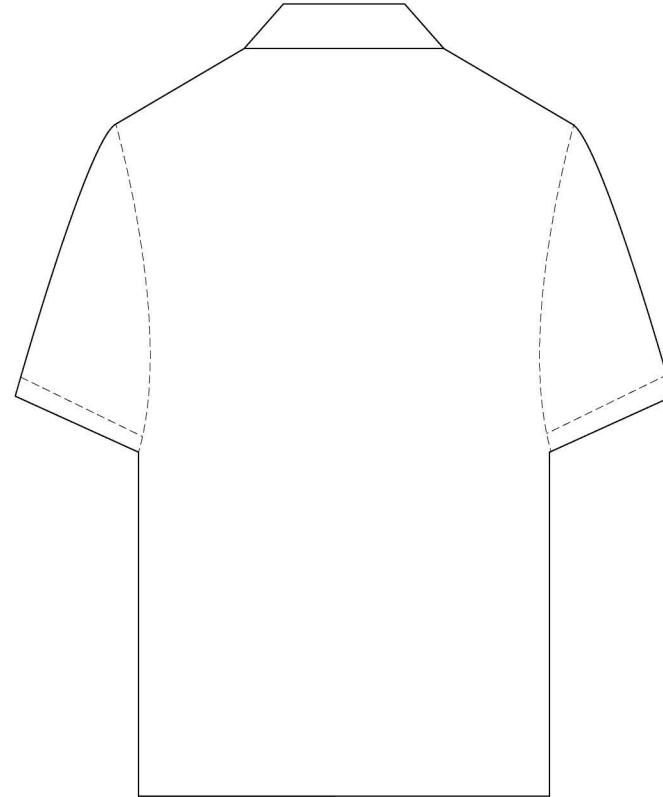
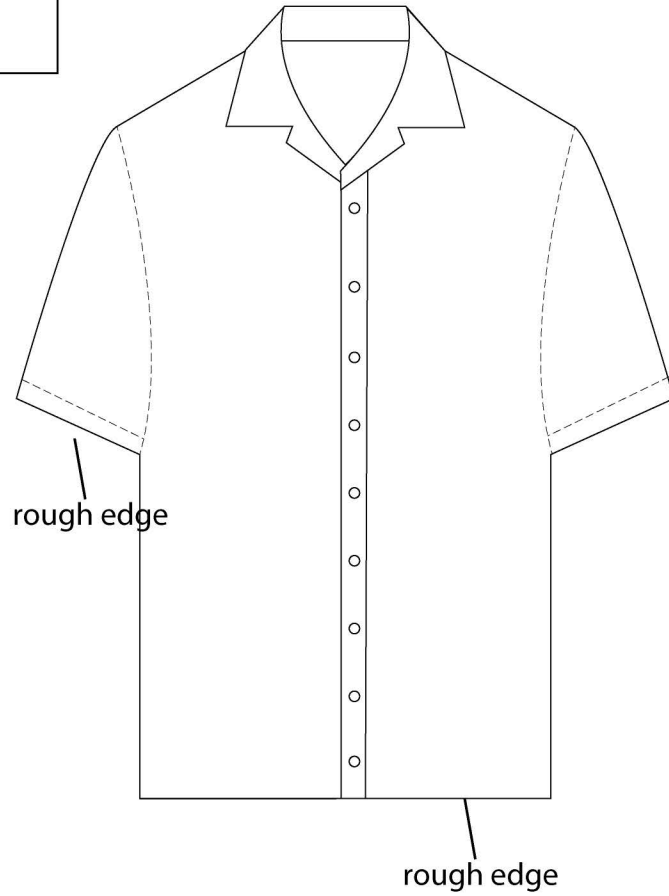


fabrication / notes

oversized hawaiian shirt

self: cotton blend

second option: self: printed jersey mesh



original

collection one **best dressed**



